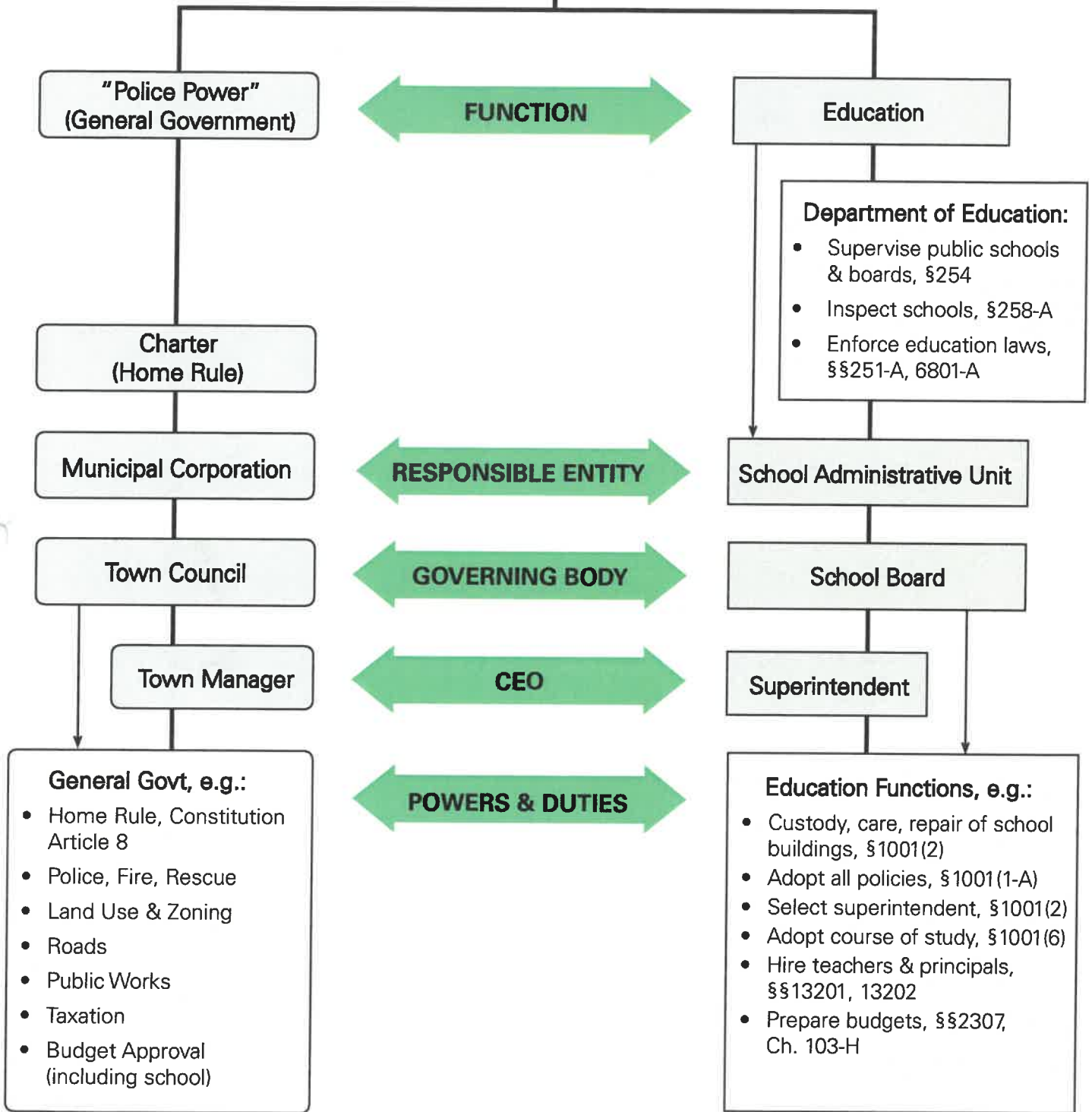


State Legislature



**"Police Power"
(General Government)**

FUNCTION

Education

**Charter
(Home Rule)**

- Department of Education:**
- Supervise public schools & boards, §254
 - Inspect schools, §258-A
 - Enforce education laws, §§251-A, 6801-A

Municipal Corporation

RESPONSIBLE ENTITY

School Administrative Unit

Town Council

GOVERNING BODY

School Board

Town Manager

CEO

Superintendent

- General Govt, e.g.:**
- Home Rule, Constitution Article 8
 - Police, Fire, Rescue
 - Land Use & Zoning
 - Roads
 - Public Works
 - Taxation
 - Budget Approval (including school)

POWERS & DUTIES

- Education Functions, e.g.:**
- Custody, care, repair of school buildings, §1001(2)
 - Adopt all policies, §1001(1-A)
 - Select superintendent, §1001(2)
 - Adopt course of study, §1001(6)
 - Hire teachers & principals, §§13201, 13202
 - Prepare budgets, §§2307, Ch. 103-H